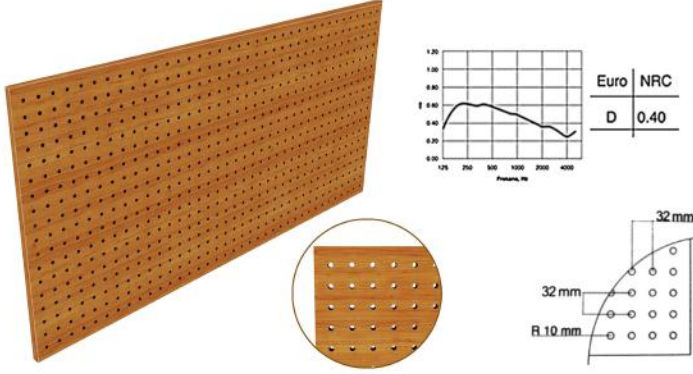


Mevcut mekânda oluşan değişken frekandaki ses dalgalarının duvar veya tavan yüzeyine çarpması neticesinde rezonansa girmesini önleyici ve sesin net olarak duyulmasına imkân veren panel tamamen sürdürülebilir (geri dönüştürülebilir) malzemelerden üretilmektedir.

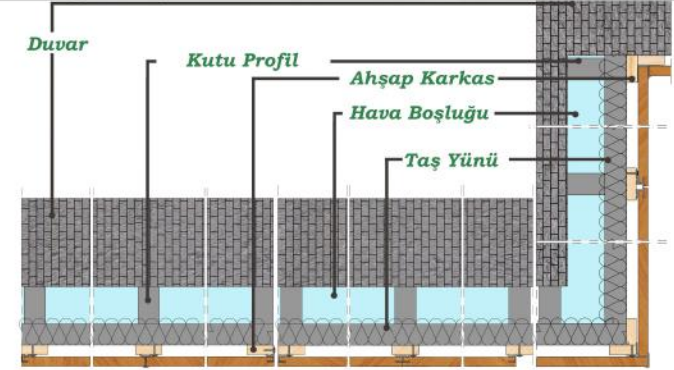
Doğa dostu ve zararsız malzemelerden üretilen paneller, mekânın ses kalitesini artırırken şık tasarımları ile estetik kaygıların da önüne geçer.

Zengin renk seçenekleri ile her mekânda kullanıma uygundur.



## Montaj Detayları (Duvar)

### Omega Profil



Omega profil duvar paneli montajında kullanılabilir. Beş farklı profil seçeneği mevcuttur. Aynı sistemin tavan paneli montajında kullanılması da mümkündür.



### Bağırsak

### Lamba & Zivana



## Montaj Detayı (Tavan)

Tavan panellerimiz için klasik ve modern olmak üzere iki farklı taşıyıcı sistem kullanılır.

### Klasik

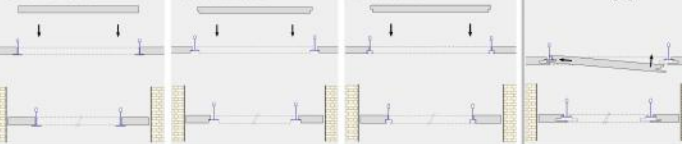
### Modern

#### Oturmalı

#### Sarkmalı

#### Kanallı

#### Gizli Taşıyıcı



## Ham Madde

750 kg/m<sup>3</sup> yoğunlukta MDF ya da yangın dayanımlı MDF.

## ÖLÇÜLER (Tavan)

Genişlik	Uzunluk	Kalınlık
600 mm	600 mm	8,12,18 mm
517 mm	1381 mm	12,18 mm
600 mm	1200 mm	8,12,18 mm

## ÖLÇÜLER (Duvar)

Genişlik	Uzunluk	Kalınlık
517 mm	1381 mm	12,18 mm
517 mm	2400 mm	12,18 mm
128 mm	2400 mm	12,18 mm
293 mm	2400 mm	12,18 mm
581 mm	1180 mm	12,18 mm
600 mm	1200 mm	12,18 mm

## Yüzeyler

MDF Lam, Doğal Kaplama, Yapay Kaplama, Lake Boya, Laminant Kaplama

## Ön Yüzey

-1000 delik/m<sup>2</sup>  
-Delikler arası mesafe 32x32 mm

## Arka Yüzey

0,2 mm akustik kumaş ile kaplanır.

## Delik Çapları

-4 mm  
-6 mm  
-8 mm  
-10 mm

## Yangın Dayanım Sınıfı

B s1 d0

## Kenar Detayları

Lamba & Zivana, Klips Sistem, Bağırsak, Omega Profil

## Akustik Performans

50 mm kalınlıkta 50kg/m<sup>3</sup> yoğunlukta cam yünü veya taş yünü plaka ile kullanılmalıdır.

## Ham Madde Ölçüleri

2100 mm x 2800 mm ya da 1830 mm x 3660 mm

## Yaklaşık Ağırlık

11-12 km/m<sup>2</sup>

## NRC

0,38 - 0,42

## Tavan Taşıyıcı Sistem Aparatları

Paneller T24, T15 ve T24 Gizli Taşıyıcı gibi T profillerle taşınabilirken lamba-zivana sistemi ile de kullanılabilir.



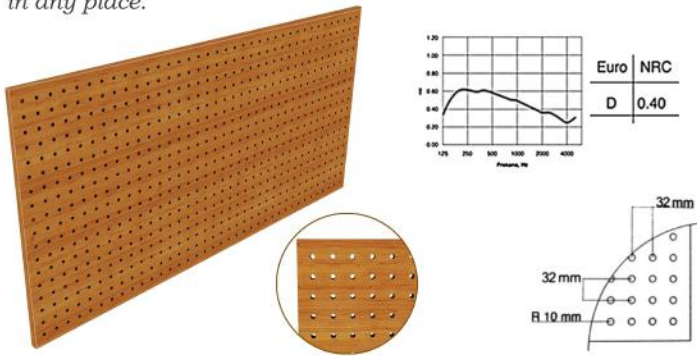
# Acoustic Wooden Panel (ESK 101)

Technical Data Sheet

This panel prevents the resonance caused by the collision of sound waves with variable frequencies in the existing space to the surface of the wall or ceiling and allows the sound to be heard clearly. It is produced from completely sustainable (recyclable) materials.

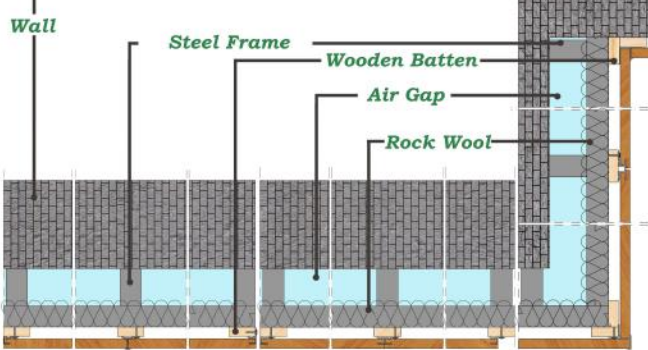
Panels produced from nature-friendly and harmless materials not only increase the sound quality of the space, but also their elegant design takes precedence over aesthetic concerns.

According to the colors it has, it can be preferred to use in any place.

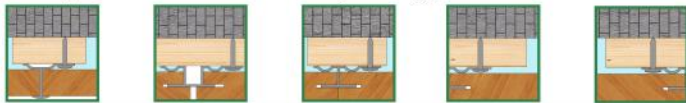


## Installation (Wall Panel)

### Omega Profile

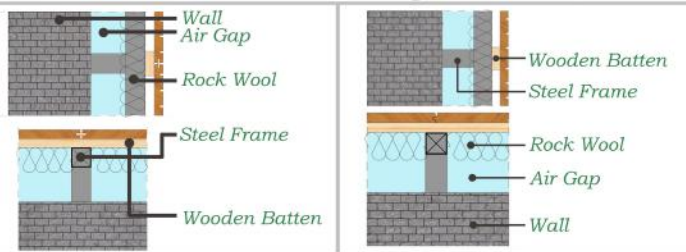


Omega profile can be used to install panels on the wall. Five different options are available. It is also possible to use this system in the installation of ceiling panels.



### Biscuit

### Tongue & Groove

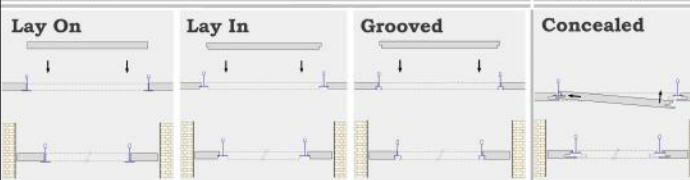


## Installation (Ceiling)

For our ceiling panels, we have two different carrier systems such as classic and modern.

### Classic

### Modern



## RAW Material

750 kg/m<sup>3</sup> density MDF or Fire Reterdant MDF.

## DIMINTIONS (Ceiling)

Width	Lenght	Thickness
600 mm	600 mm	8,12,18 mm
517 mm	1381 mm	12,18 mm
600 mm	1200 mm	8,12,18 mm

## DIMINTIONS (Wall)

Width	Lenght	Thickness
517 mm	1381 mm	12,18 mm
517 mm	2400 mm	12,18 mm
128 mm	2400 mm	12,18 mm
293 mm	2400 mm	12,18 mm
581 mm	1180 mm	12,18 mm
600 mm	1200 mm	12,18 mm

## Surface

Melamine, Natural Vener, Engineered Vener, Painted, Laminated

## Front Side

-1000 holes/m<sup>2</sup>  
-Distance between holes 32x32 mm

## Back Side

-Covered with 0,2 mm acoustic fabric.

## Hole Diameter

-4 mm  
-6 mm  
-8 mm  
-10 mm

## Fire Resistance Class

B s1 d0

## Edge Details

Tongue and Groove, Clips System, Biscuit, Omega Profile.

## Acoustic Features

It should be used with 50 mm tick, 50kg/m<sup>3</sup> density glass wool or rock wool board.

## Board Size

2100 mm x 2800 mm or 1830 mm x 3660 mm

## Approximate Weight

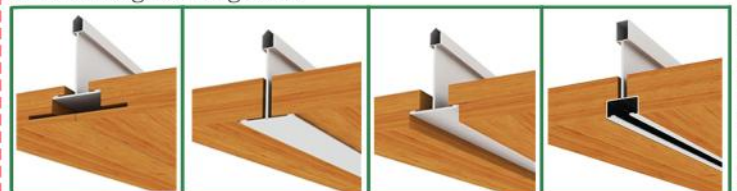
11-12 km/m<sup>2</sup>

## NRC

0,38 - 0,42

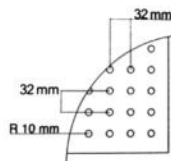
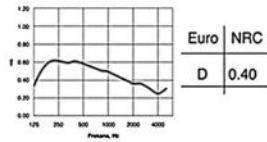
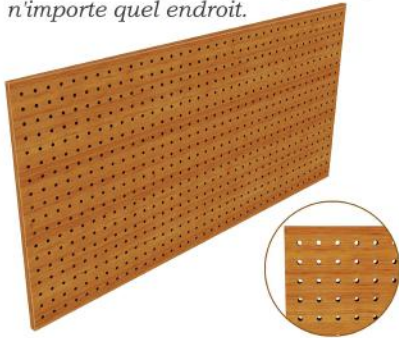
## Ceiling Application

Panel can be used with T bars such as T24, T15, T24 concealed or with tongue and groove.



Ce panneau empêche la résonance causée par la collision des ondes sonores de fréquences variables dans l'espace existant avec la surface du mur ou du plafond et permet au son d'être entendu clairement. Il est produit à partir de matériaux entièrement durables (recyclables).

Les panneaux fabriqués à partir de matériaux respectueux de l'environnement et non nocifs non seulement augmentent la qualité sonore de l'espace, mais leur design élégant prime également sur les préoccupations esthétiques. Selon les couleurs qu'il possède, il peut être préféré pour une utilisation dans n'importe quel endroit.



## Matière Première

MDF d'une densité de 750 kg/m<sup>3</sup> ou MDF ignifuge

## DIMENSIONS (Plafond)

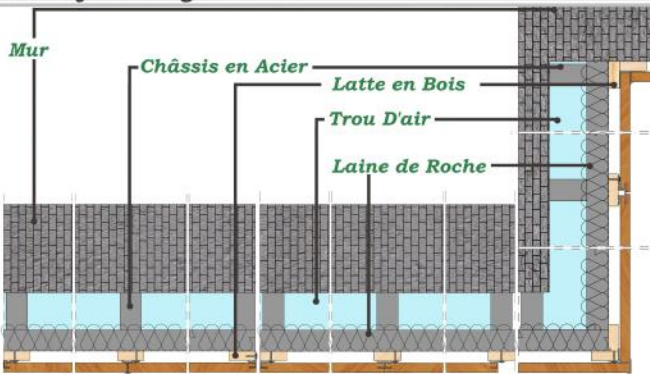
Largeur	Longueur	Épaisseur
600 mm	600 mm	8,12,18 mm
517 mm	1381 mm	12,18 mm
600 mm	1200 mm	8,12,18 mm

## DIMENSIONS (Mur)

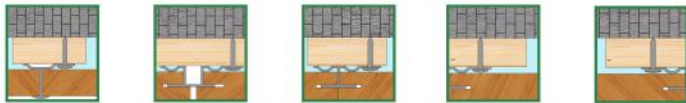
Largeur	Longueur	Épaisseur
517 mm	1381 mm	12,18 mm
517 mm	2400 mm	12,18 mm
128 mm	2400 mm	12,18 mm
293 mm	2400 mm	12,18 mm
581 mm	1180 mm	12,18 mm
600 mm	1200 mm	12,18 mm

## Installation (Panneau Mural)

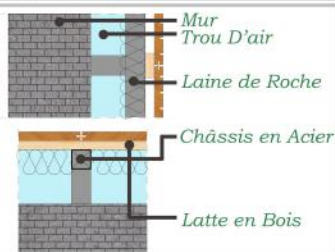
### Le Profil Omega



Le Profil Omega peut être utilisé pour installer des panneaux sur le mur. Cinq différentes options disponibles. Il est également possible d'utiliser ce système dans l'installation de panneaux de plafond.



### Biscuit



### Rainure et Languette

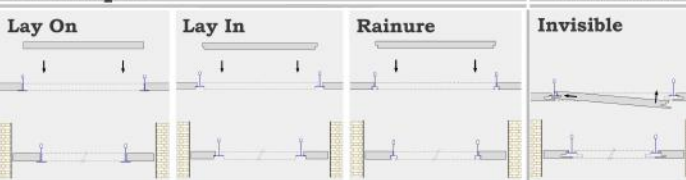


## Installation (Plafond)

Pour nos panneaux de plafond, nous avons deux différents systèmes porteurs tels que classique et moderne.

### Classique

### Moderne



## Surface

Mélamine, Placage Naturel, Placage D'ingénierie, Peint, Feuilleté

## La Face D'avant

-1000 trous/m<sup>2</sup>  
-Distance entre les trous 32x32 mm

## La Face D'arrière

-Recouvert de tissu acoustique de 0,2 mm.

## Le Diamètre du Trou

-4 mm  
-6 mm  
-8 mm  
-10 mm

## Classe de Résistance au Feu

B s1 d0

## Détails du Bord

Rainure et Languette, Système de Clips, Biscuit, Profil Omega

## Les Caractéristiques D'acoustiques

Il doit être utilisé avec des panneaux de laine de verre ou de laine de roche de 5 cm d'épaisseur et d'une densité de 50 kg/m<sup>3</sup>.

## Taille du Tableau

2100 mm x 2800 mm ou 1830 mm x 3660 mm

## Poids Approximatif

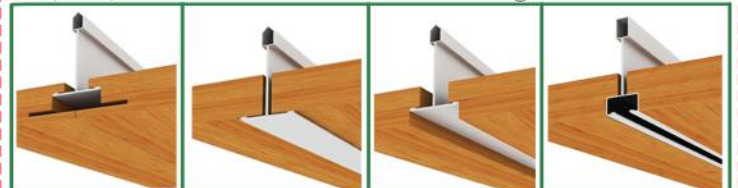
11-12 km/m<sup>2</sup>

## NRC

0,38 - 0,42

## Application au Plafond

Le panneau peut être utilisé avec des barres en T telles que T24, T15, T24 invisible ou avec rainure et languette.



## Les Coins

